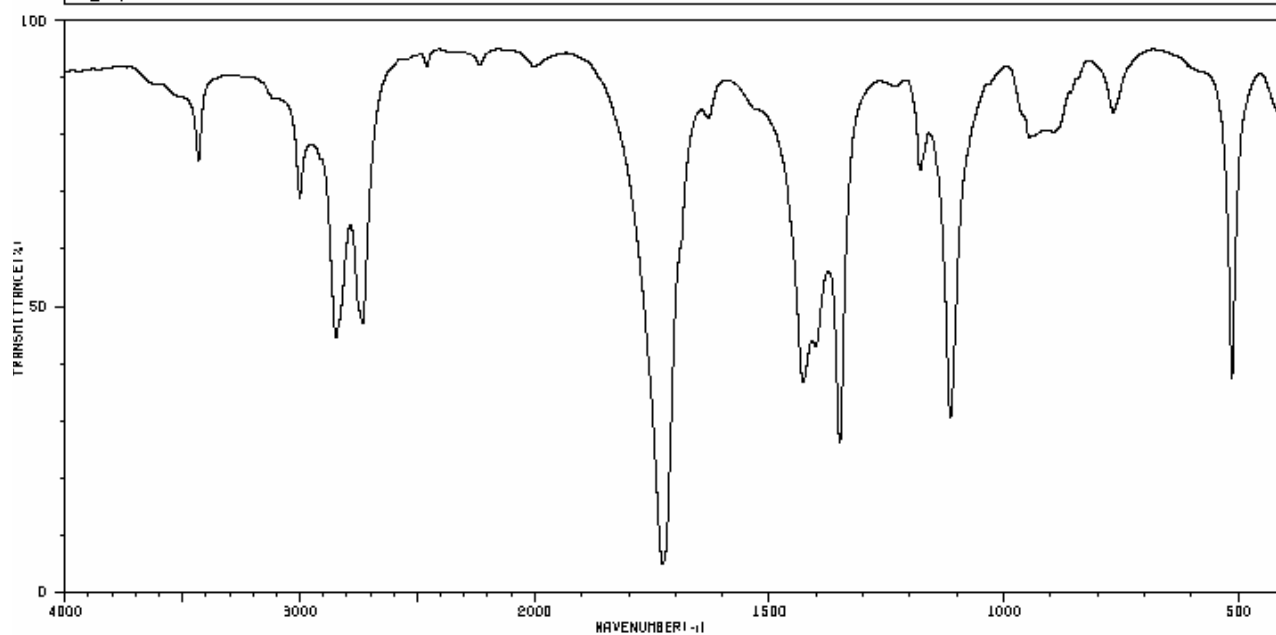
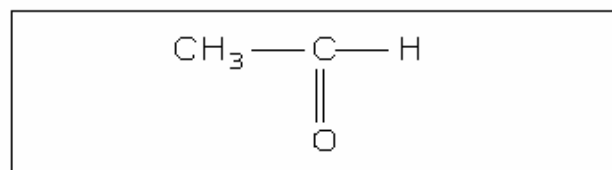


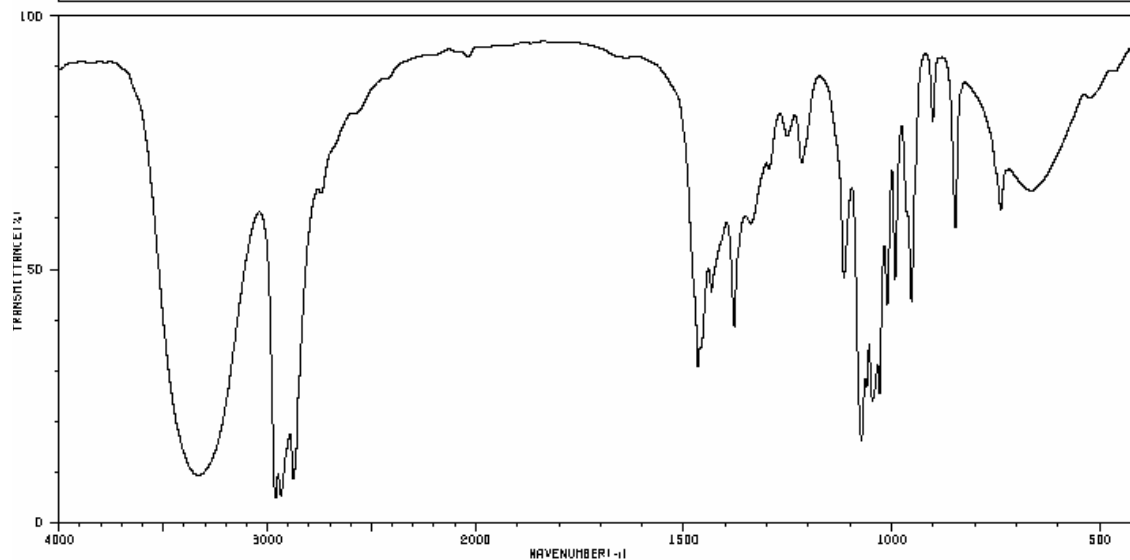
HIT-NO=949	SCORE= ()	SDBS-NO=305	IR-NIDA-40660 : LIQUID FILM
ACETALDEHYDE			
C ₂ H ₄ O			



3432	72	1401	41
3001	66	1350	25
2846	42	1179	70
2733	44	1114	29
1727	4	945	77
1629	79	767	81
1429	36	614	36



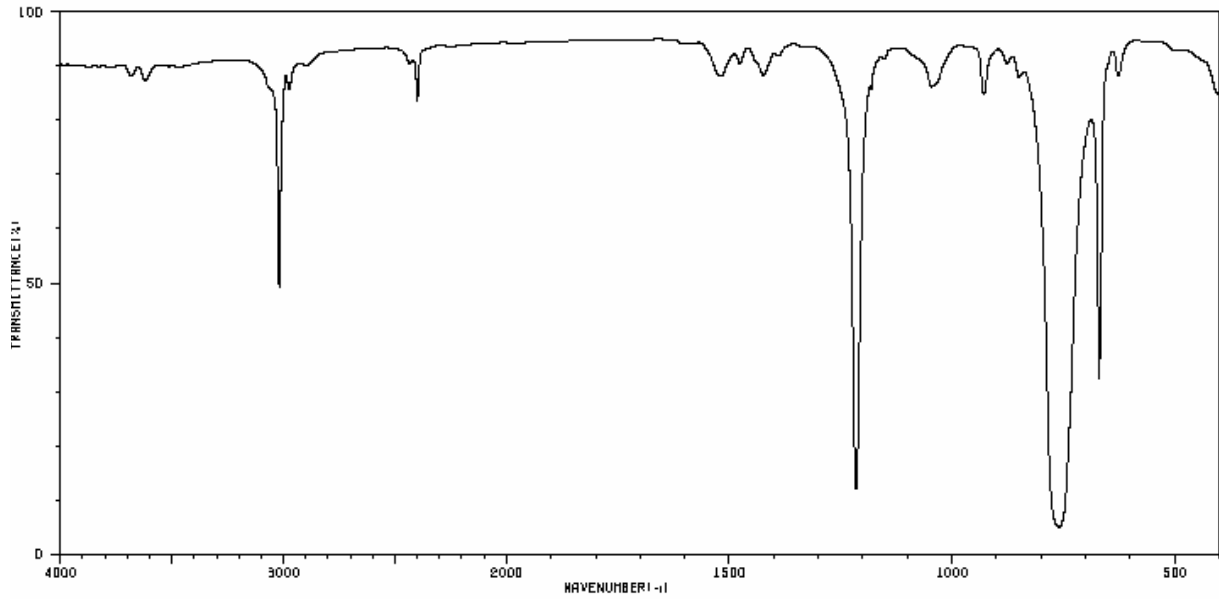
HIT-NO=1418	SCORE= ()	SDBS-NO=1374	IR-NIDA-05408 : LIQUID FILM
1-BUTANOL			
C ₄ H ₁₀ O			



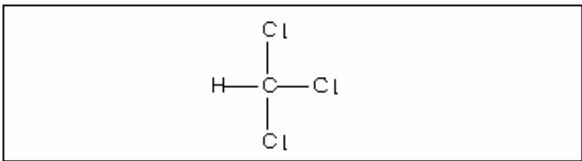
3333	9	1434	48	1073	15	901	77
3323	9	1379	37	1060	26	847	57
2960	4	1338	57	1047	23	738	58
2934	6	1296	68	1029	24	670	62
2875	8	1252	74	1011	42	665	62
1466	30	1217	68	992	46		
1461	33	1116	46	953	42		



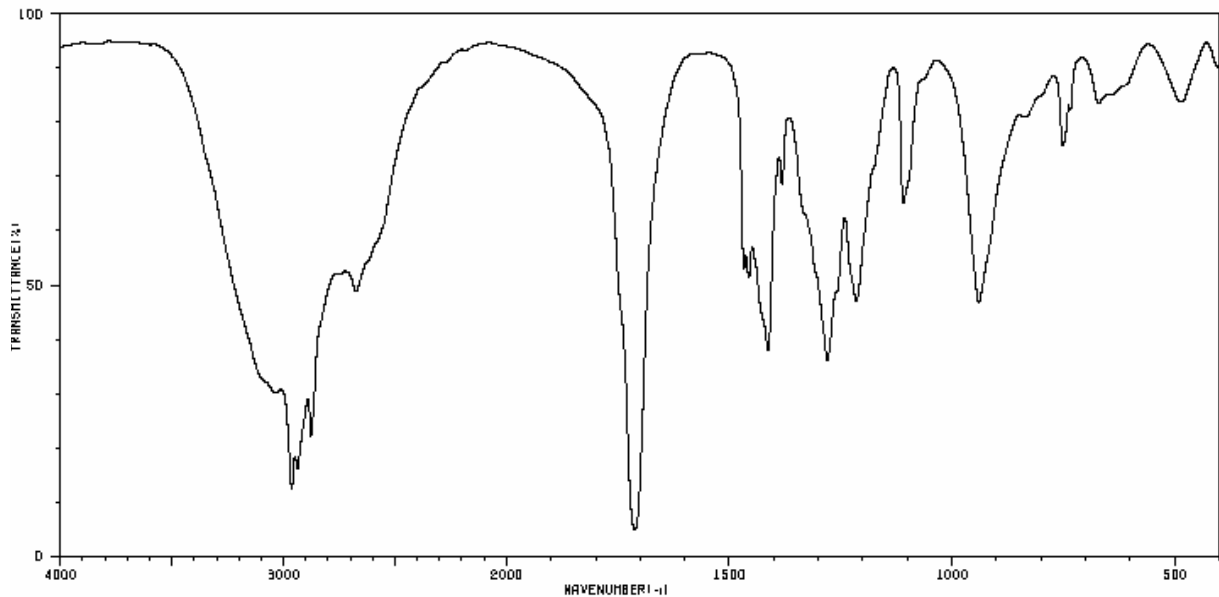
HIT-NO=1233	SCORE= ()	SOBS-NO=894	IR-NIDA-01674 : LIQUID FILM
CHLOROFORM			
CHCl ₃			



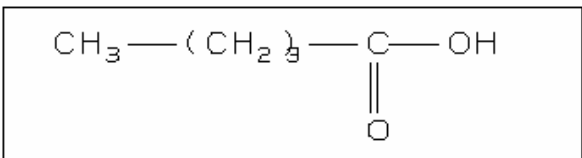
3663	84	1216	11
3618	84	1047	84
3019	47	1041	84
2976	81	929	81
2400	79	760	4
1520	84	671	31
1423	84	627	84



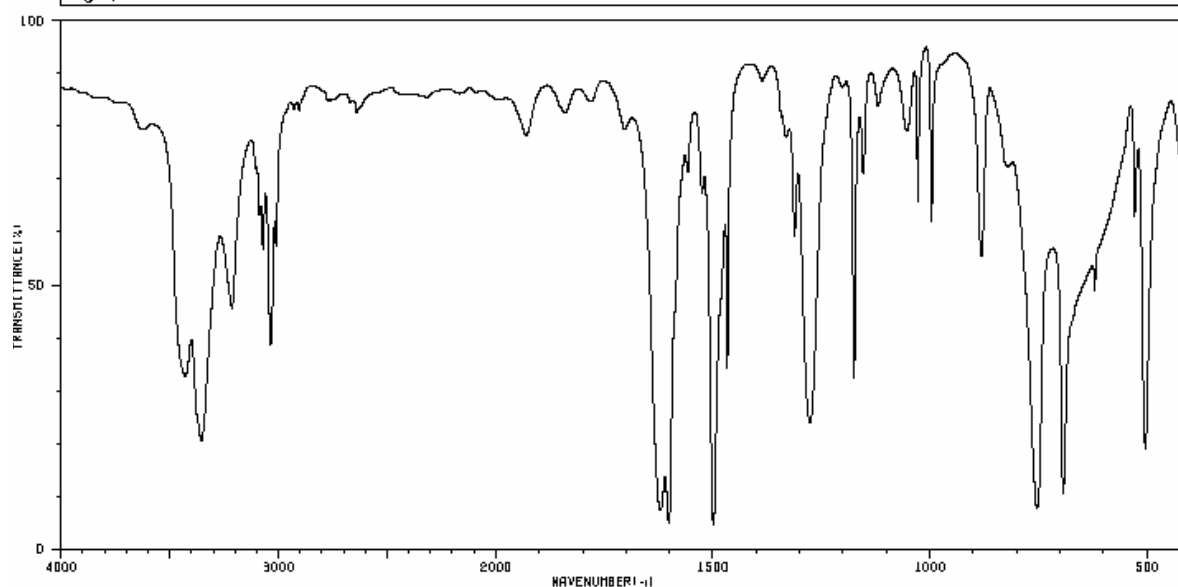
HIT-NO=2259	SCORE= ()	SOBS-NO=3381	IR-NIDA-02097 : LIQUID FILM
VALERIC ACID			
C ₅ H ₁₀ O ₂			



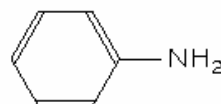
2963	12	1413	36	734	79
2937	15	1382	66	671	81
2877	21	1280	34	466	81
2674	47	1216	44		
1712	4	1110	62		
1466	50	940	44		
1466	49	762	72		



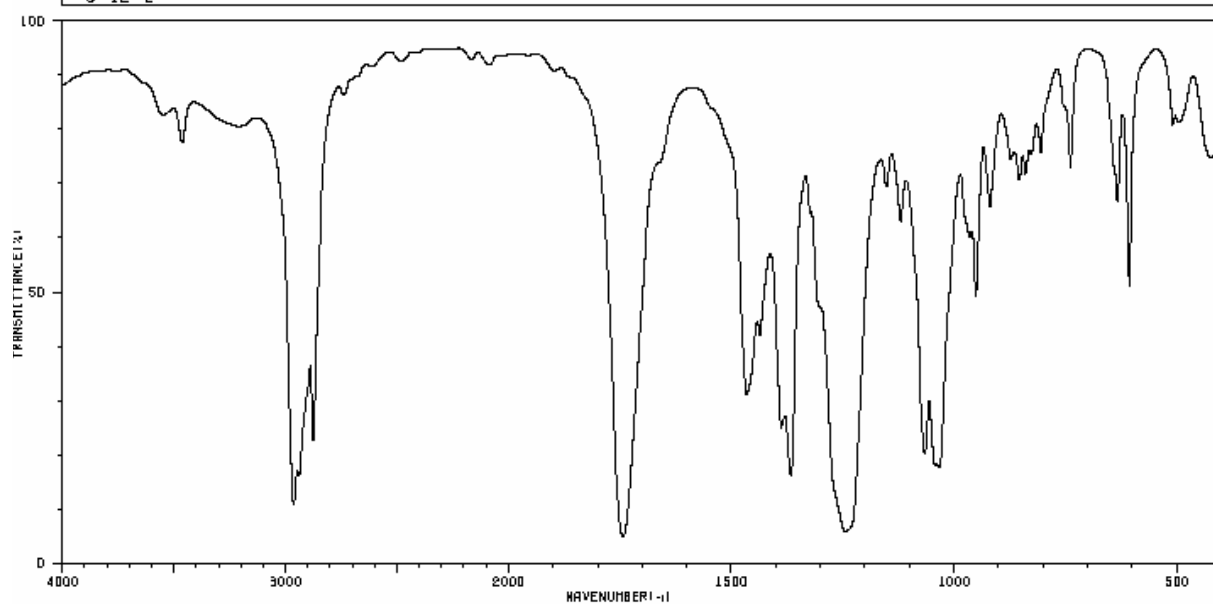
HIT-NO=1244 SCORE= () SDBS-NO=905 IR-NIDA-15056 : LIQUID FILM
 ANILINE
 C_6H_7N



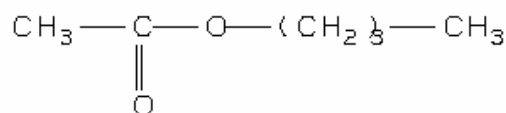
3623	77	3010	67	1705	77	1332	74	996	60
3429	32	2930	81	1621	7	1312	57	881	53
3354	20	2904	79	1801	5	1277	29	754	6
3214	44	2840	79	1557	70	1176	32	693	10
3088	62	2627	81	1525	66	1154	68	620	47
3072	55	1929	77	1496	4	1053	77	529	60
3037	38	1839	79	1467	34	1028	64	504	18



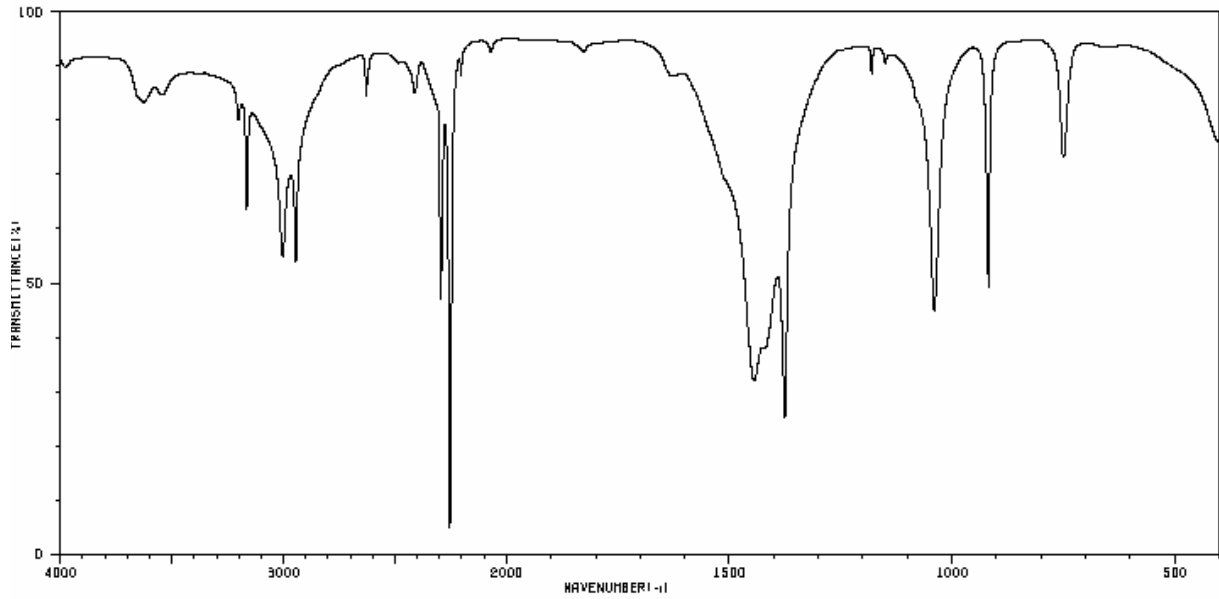
HIT-NO=2228 SCORE= () SDBS-NO=3292 IR-NIDA-63524 : LIQUID FILM
 BUTYL ACETATE
 $C_6H_{12}O_2$



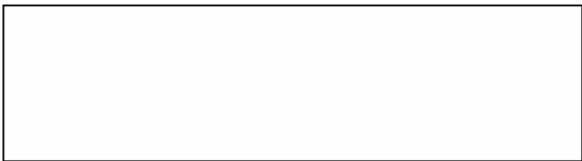
3646	79	1467	30	1066	19	874	72	609	77
3463	74	1438	41	1044	17	853	68	495	79
2963	10	1388	23	1036	17	840	68	425	72
2938	16	1367	16	1032	17	806	72		
2876	21	1244	5	965	58	739	70		
2738	84	1152	66	951	47	634	64		
1743	4	1120	60	919	64	606	48		



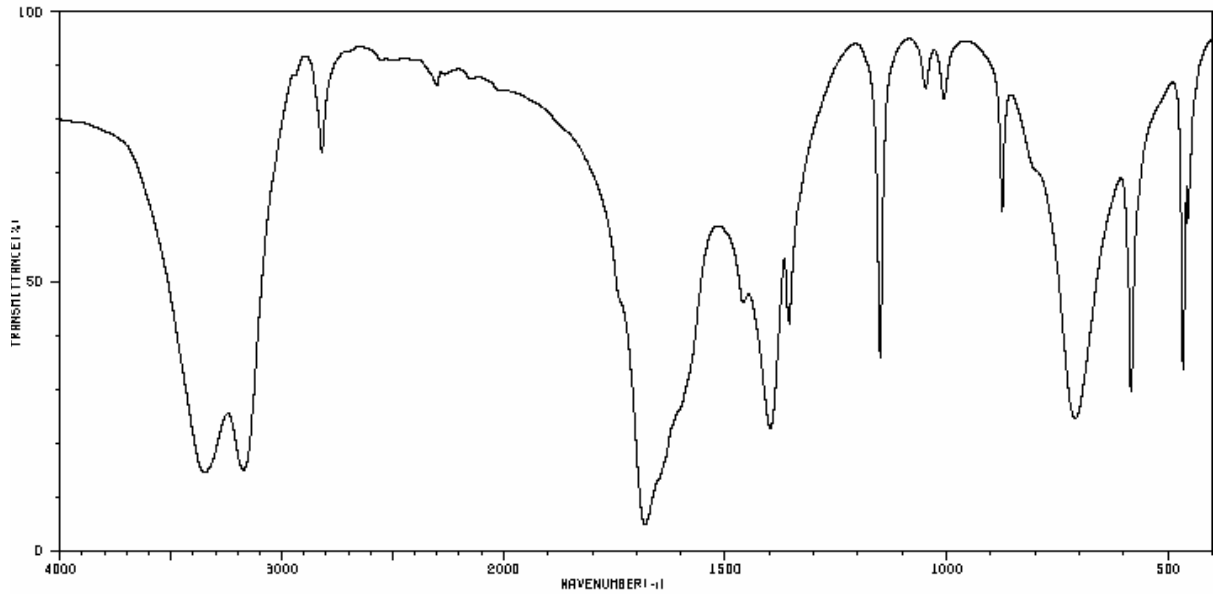
HIT-NO=1913	SCORE= ()	SOBS-NO=1218	IR-NIDA-01782 : LIQUID FILM
ACETONITRILE			
C ₂ H ₃ N			



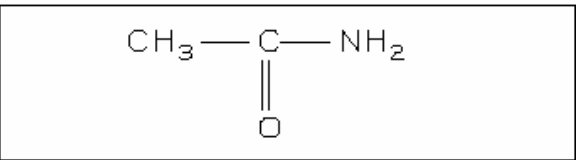
3626	79	2410	81	1040	43
3544	81	2293	44	918	47
3202	77	2254	4	750	70
3164	60	2204	84		
3003	52	1445	30		
2944	52	1378	29		
2829	81	1181	84		



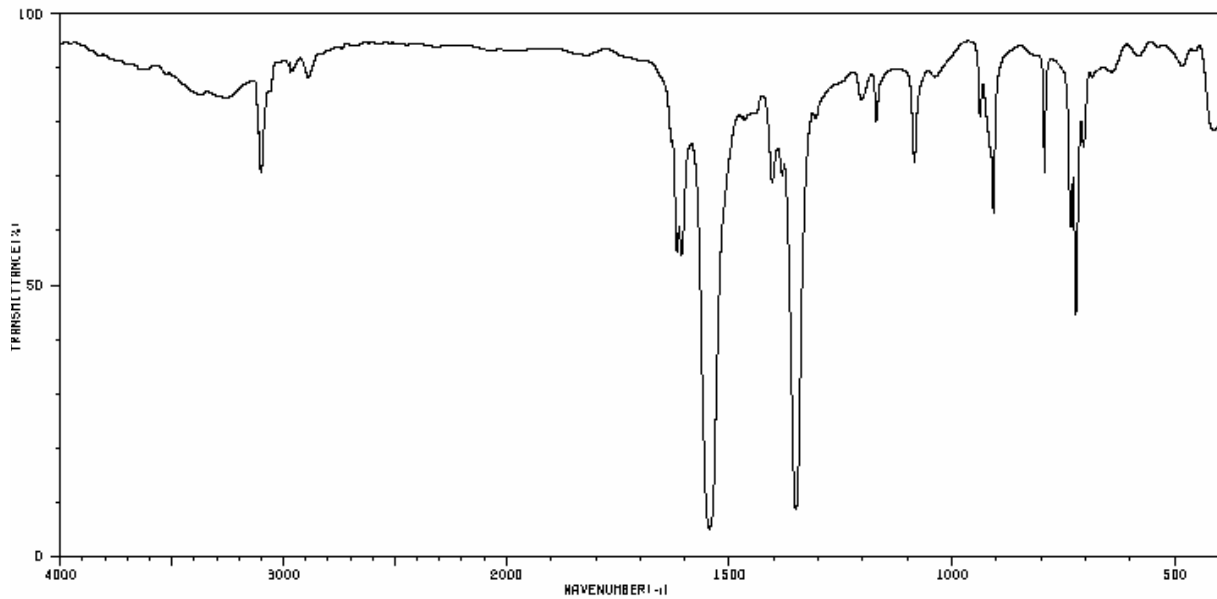
HIT-NO=1501	SCORE= ()	SOBS-NO=1491	IR-NIDA-04320 : KBR DISC
ACETAMIDE			
C ₂ H ₅ NO			



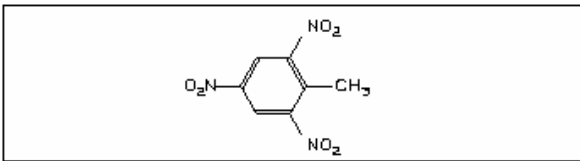
3348	13	1666	41	467	32
3173	14	1151	34	457	58
2819	70	1047	81		
2301	84	1006	81		
1681	4	874	60		
1460	44	710	29		
1398	21	684	28		



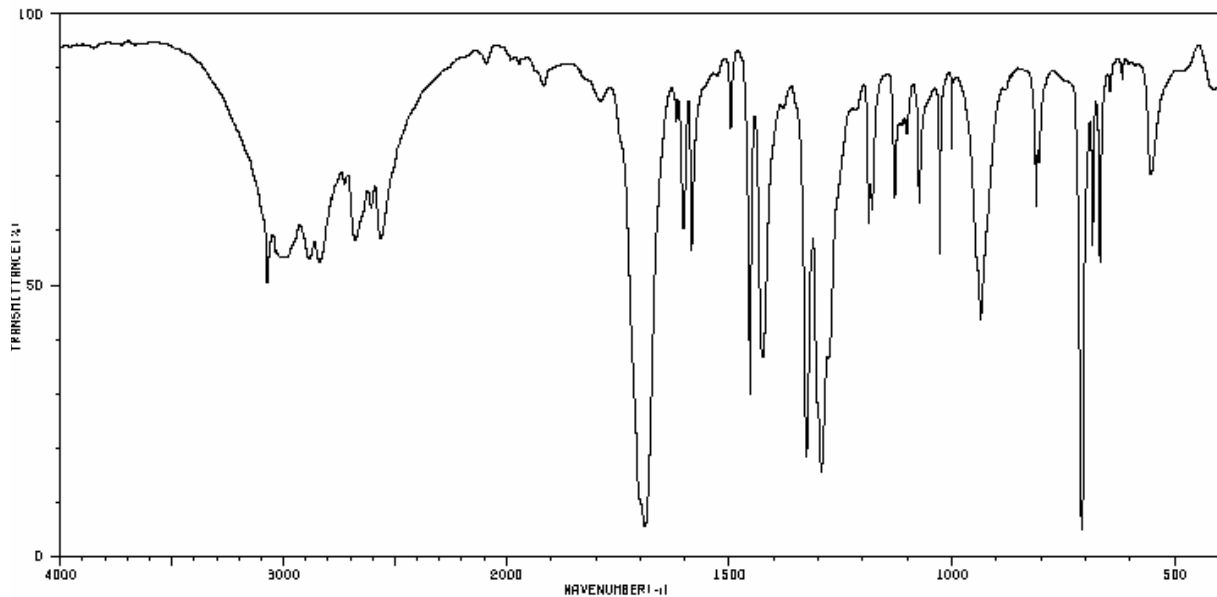
HIT-NO=17697 SCORE= () SDBS-NO=32220 IR-NIDA-48904 : KBR DISC
 2,4,6-TRINITROTOLUENE
 $C_7H_5N_3O_6$



3111	74	1607	69	1170	77	733	68
3099	68	1544	4	1084	70	722	43
3068	74	1468	77	1036	84	705	72
2972	86	1404	66	938	79		
2956	86	1361	68	915	72		
2888	84	1351	8	907	80		
1618	63	1203	81	793	68		



HIT-NO=1081 SCORE= () SDBS-NO=673 IR-NIDA-63340 : KBR DISC
 BENZOIC ACID
 $C_7H_6O_2$



3073	49	2678	67	1426	36	1112	77	936	42
3012	53	2607	62	1327	17	1107	77	812	62
2998	53	2564	57	1294	14	1102	74	805	70
2986	63	1689	6	1187	68	1074	62	708	4
2886	52	1603	58	1180	60	1028	53	685	55
2838	52	1585	59	1129	84	1001	72	667	52
2726	66	1464	28	1118	77	943	60	664	68

